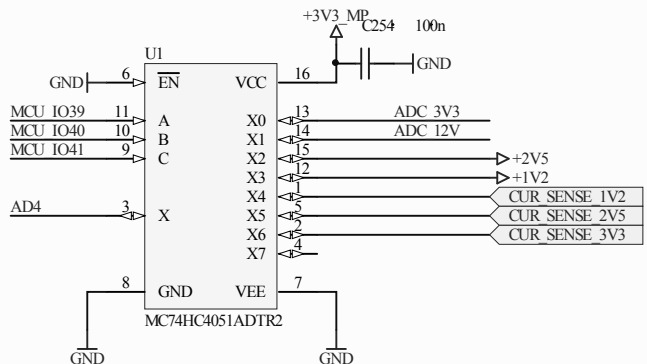
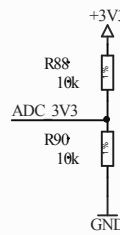
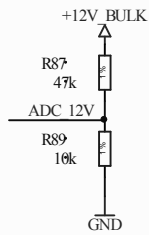
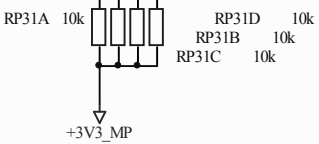
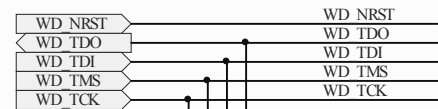
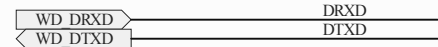
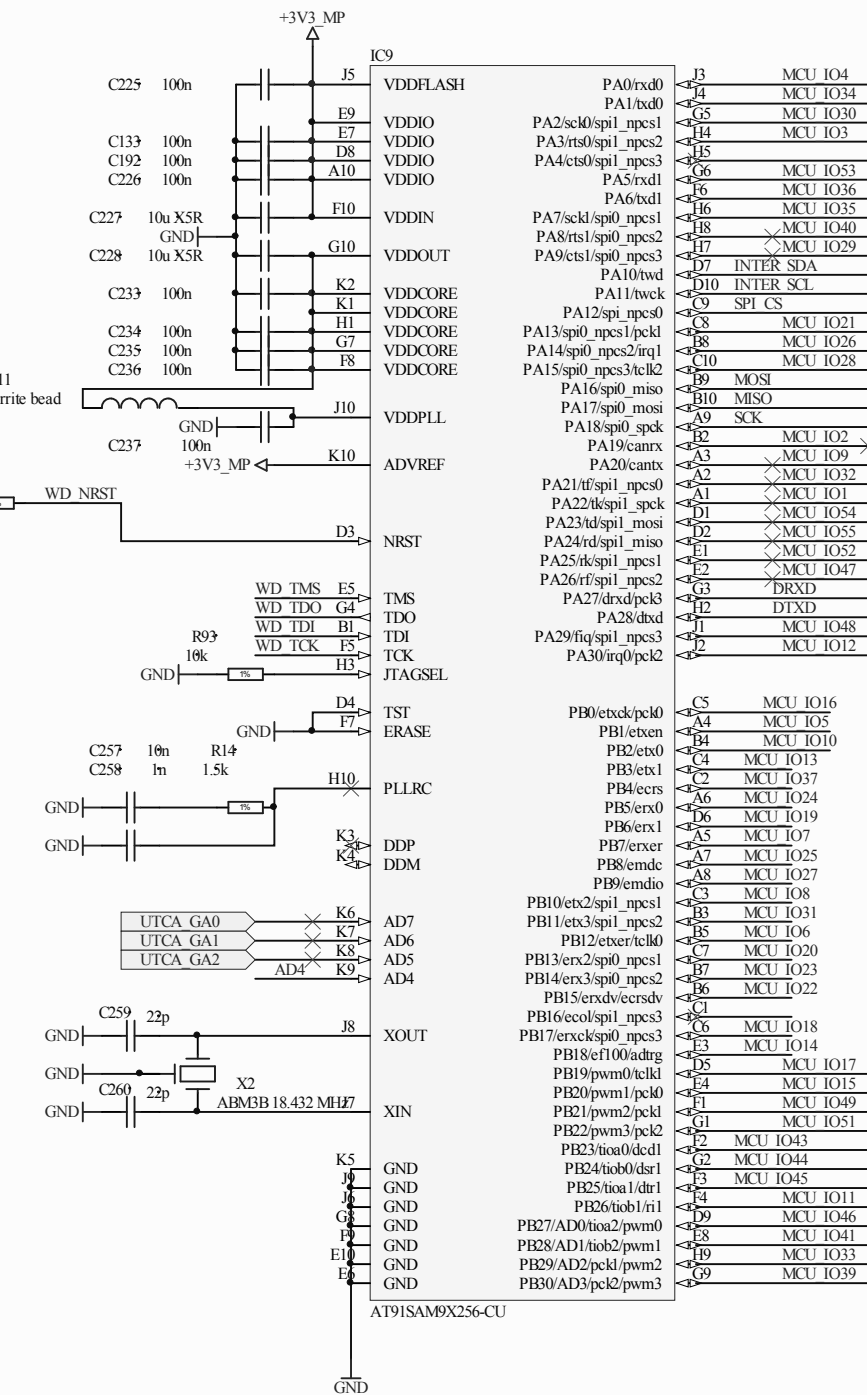
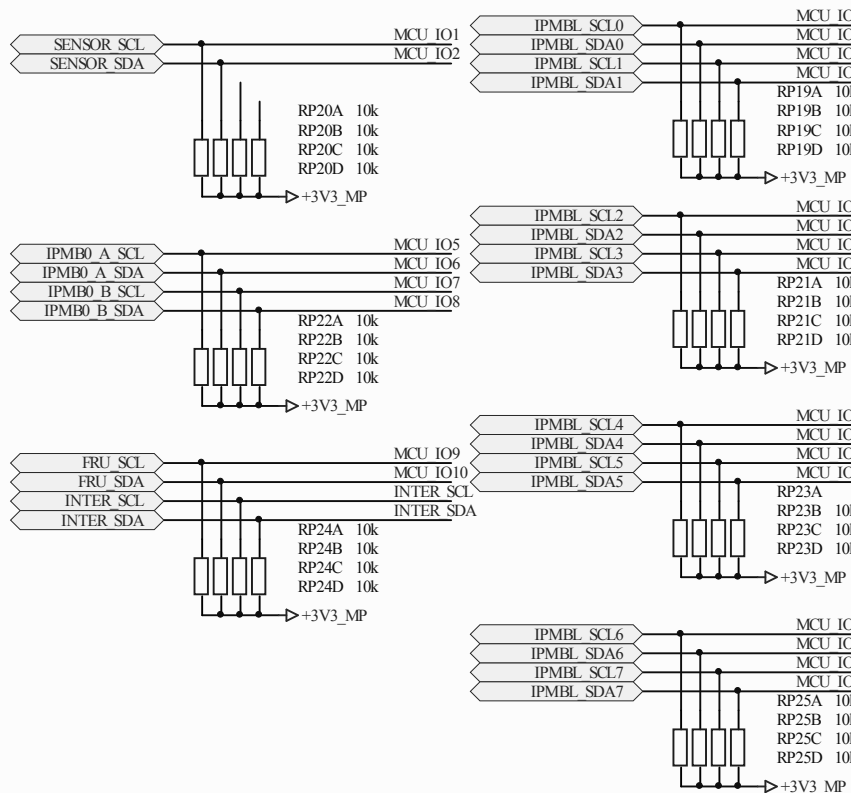
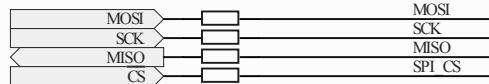


- MCH watchdog microcontroller:
- takes care of safe boot process after reprogramming
 - monitors board temperature and supply voltages
 - implements multichannel I2C hub for IPMB bus access
 - takes care of uTCA board initialization
 - CAN'T BE PROGRAMMED REMOTELY



Project: White Rabbit Switch MCH - mainboard

Sheet: ARM7 watchdog microcontroller

Version: 1.1.0

Date: 2009/11/12

Author: Tomasz Wlostowski

License: Open Hardware License (OHL)

Company: CERN BE-CO-HT