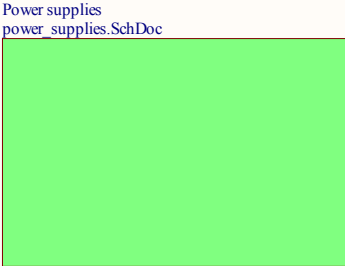
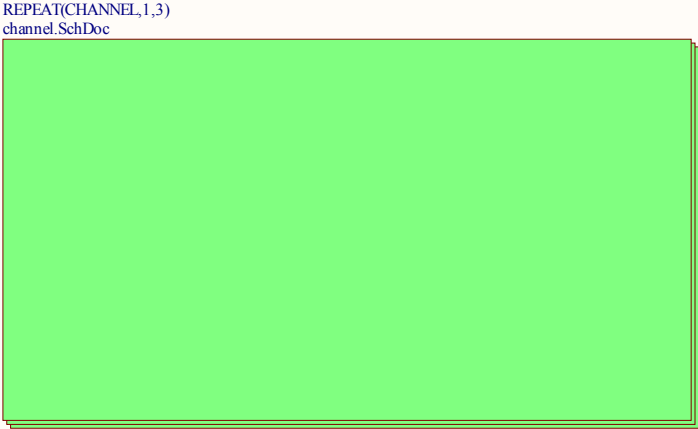


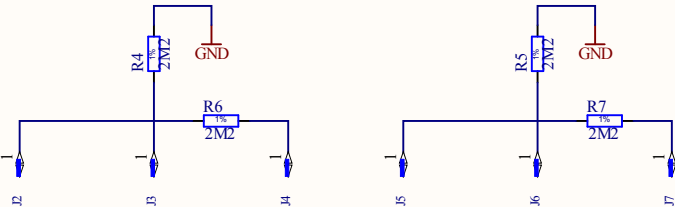
▲ NIM levels:
Logic 1 = -14mA to -18mA into 50ohms
Logic 0 = -1mA to +1mA into 50ohms



GND test points

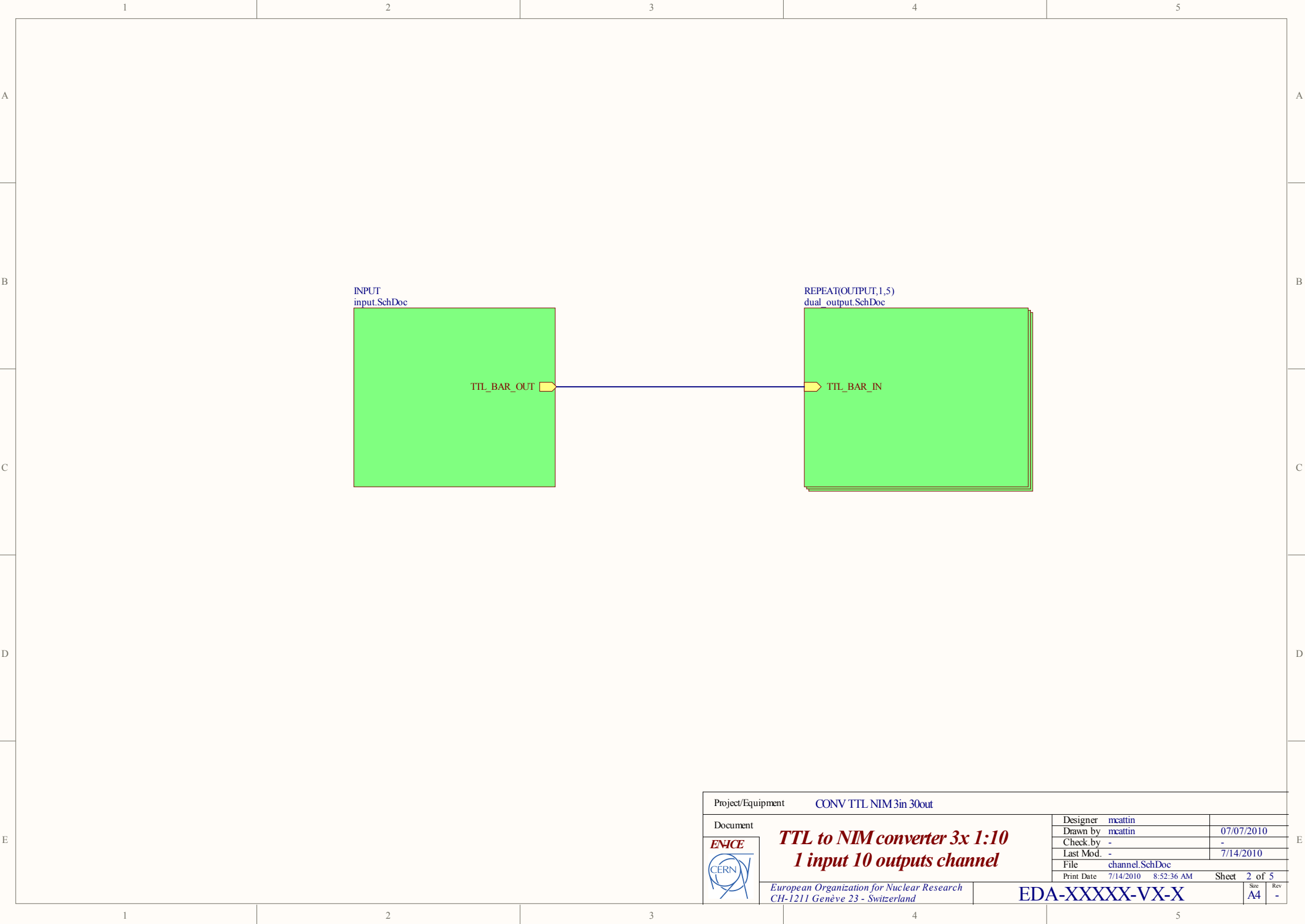



ESD discharge strips (top and bottom of the card)

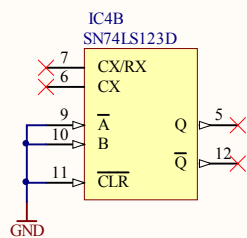
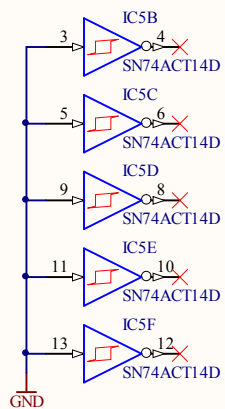
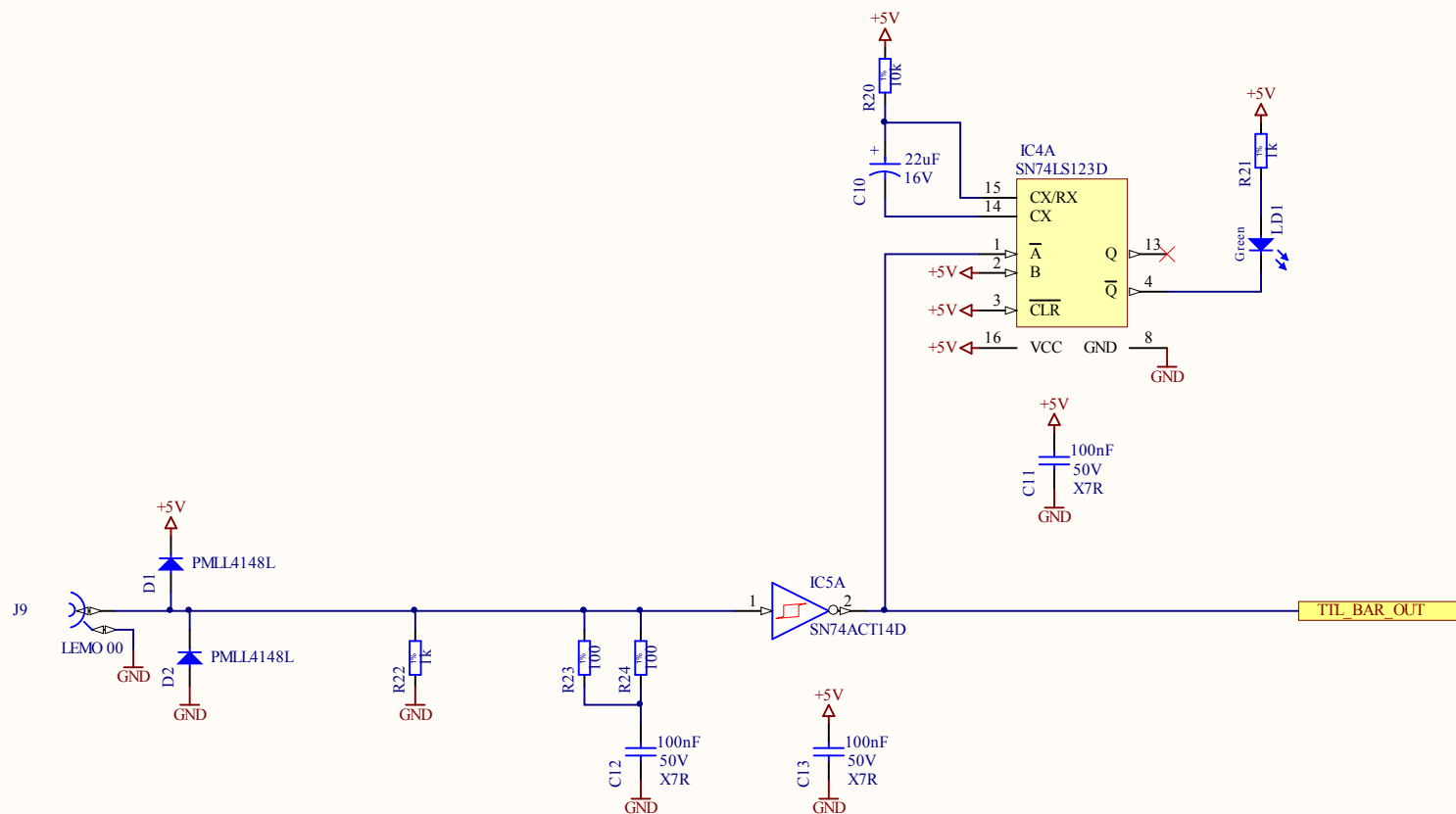



Project/Equipment		CONV TTL NIM 3in 30out		
<div>ENICE</div> <div>CERN</div>	<div>TTL to NIM converter 3x 1:10</div> <div>Top level</div> <div>European Organization for Nuclear Research CH-1211 Genève 23 - Switzerland</div>	Designer	mcatin	
		Drawn by	mcatin	07/07/2010
		Check by	-	-
		Last Mod.	-	7/14/2010
		File	top.SchDoc	
		Print Date	7/14/2010 8:52:36 AM	Sheet 1 of 5
EDA-XXXXX-VX-X		Size	A4	Rev

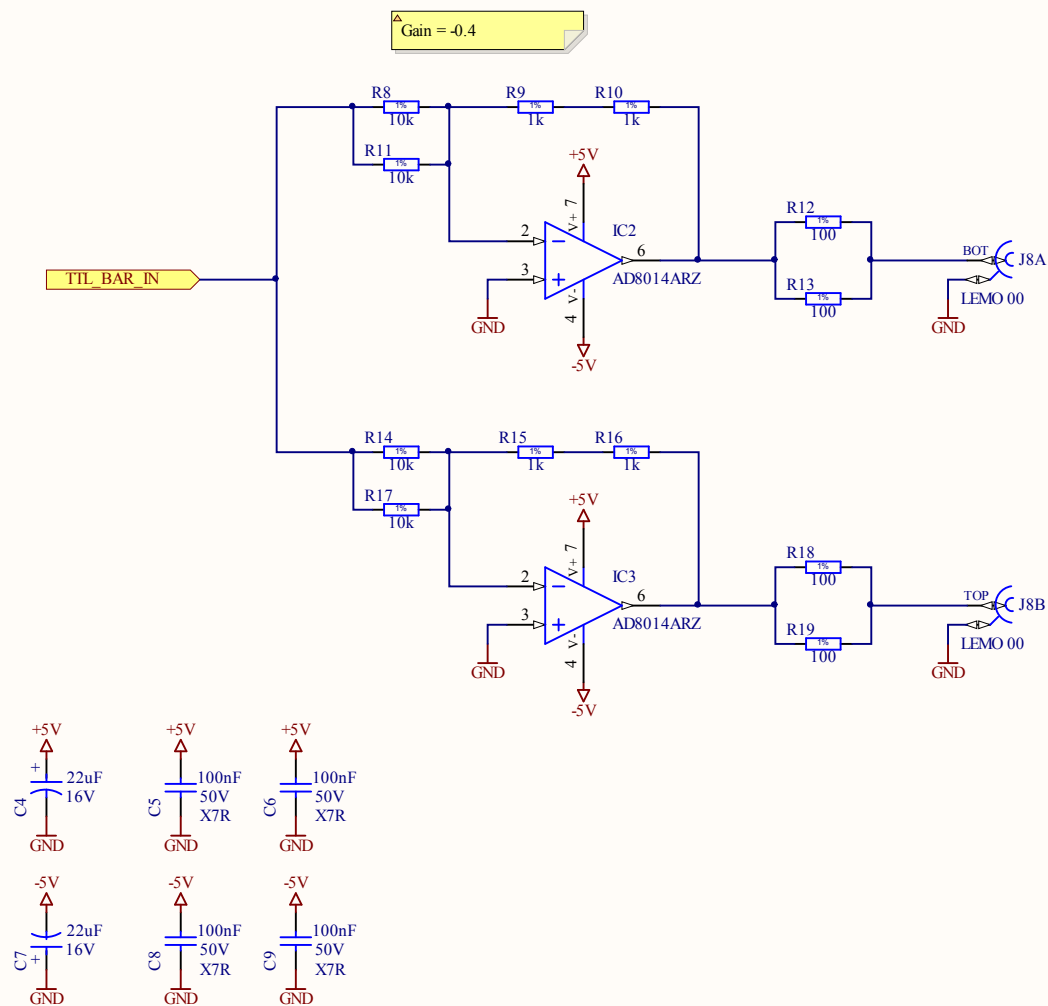
EDA-XXXXX-VX-X



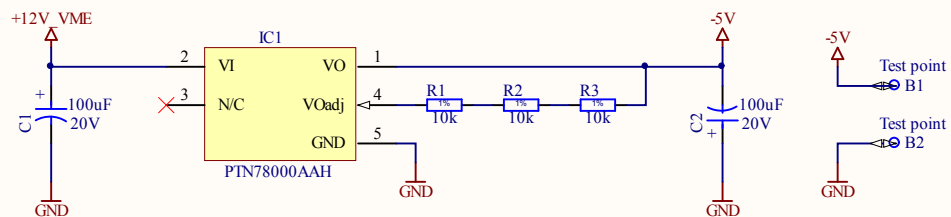
Project/Equipment		CONV TTL NIM 3in 30out				
Document		Designer		mcattin		
<div>ENICE</div> <div></div>	<div>TTL to NIM converter 3x 1:10</div> <div>1 input 10 outputs channel</div> <div>European Organization for Nuclear Research CH-1211 Genève 23 - Switzerland</div>	Drawn by		mcattin		
		Check by		-		
		Last Mod.		-		
		File		channel.SchDoc		
		Print Date		7/14/2010 8:52:36 AM		
		Sheet		2 of 5		
		EDA-XXXXX-VX-X			Size	A4
					Rev	-



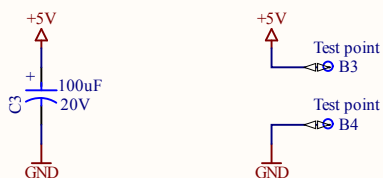
Project/Equipment		CONV TTL NIM3in 30out	
Document		<div>Designer mcatin</div> <div>Drawn by mcatin</div> <div>Check by -</div> <div>Last Mod. -</div> <div>File input.SchDoc</div> <div>Print Date 7/14/2010 8:52:36 AM</div> <div>Sheet 3 of 5</div>	
<div>ENICE</div> <div></div>			
<div>TTL to NIM converter 3x 1:10</div> <div>Input and indicator LED</div>			
<div>European Organization for Nuclear Research</div> <div>CH-1211 Genève 23 - Switzerland</div>			
<div>EDA-XXXXX-VX-X</div>			
<div>Size A4</div> <div>Rev -</div>			



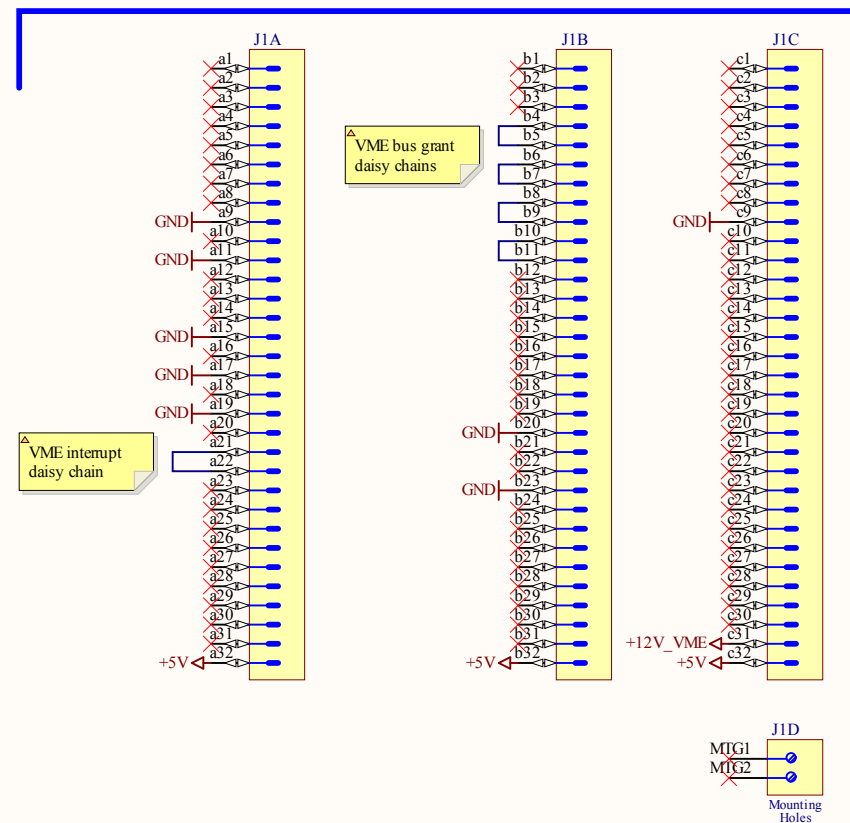
Project/Equipment		CONV TTL NIM3in 30out	
Document		TTL to NIM converter 3x 1:10 Dual output buffer block	
Designer		mcatin	07/07/2010
Drawn by		mcatin	-
Check by		-	7/14/2010
Last Mod.		-	-
File		dual_output.SchDoc	
Print Date		7/14/2010 8:52:36 AM	Sheet 4 of 5
		European Organization for Nuclear Research CH-1211 Genève 23 - Switzerland	
EDA-XXXXX-VX-X		Size A4	Rev -



Estimated power consumption:
+5V > 75mA / channel
-5V > 250mA / channel
Channel = 1 input and 10 outputs



VMEP1



Project/Equipment CONV TTL NIM3in 30out

Document



TTL to NIM converter 3x 1:10
Power supplies, VME connector

European Organization for Nuclear Research
CH-1211 Genève 23 - Switzerland

Designer mcatin

Drawn by mcatin

Check by -

Last Mod. -

File power_supplies.SchDoc

Print Date 7/14/2010 8:52:37 AM

07/07/2010

-

7/14/2010

Sheet 5 of 5

Size A4

Rev -

EDA-XXXXX-VX-X

[illegible]