

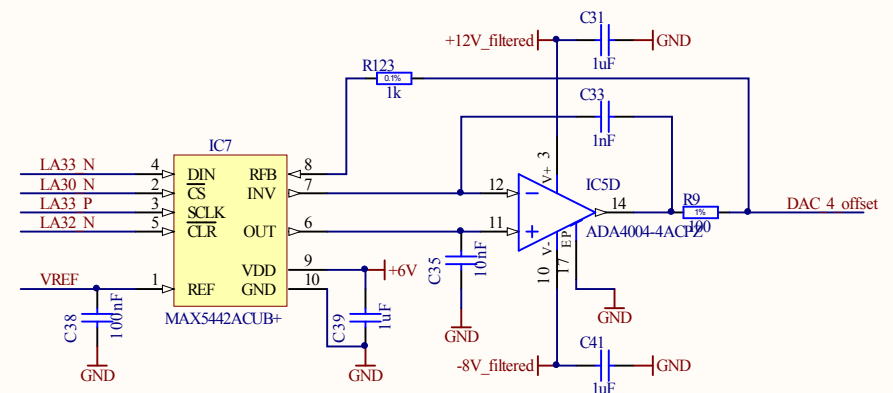
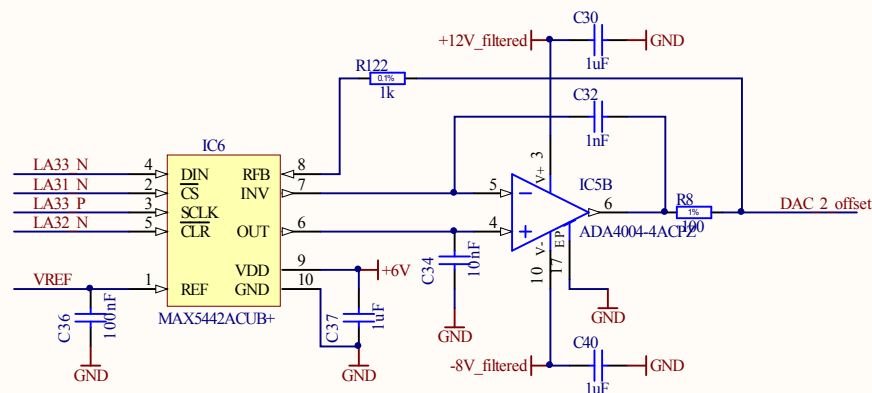
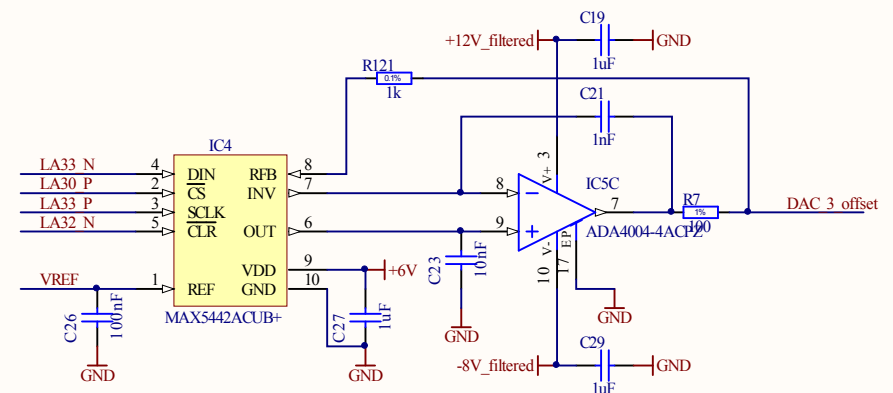
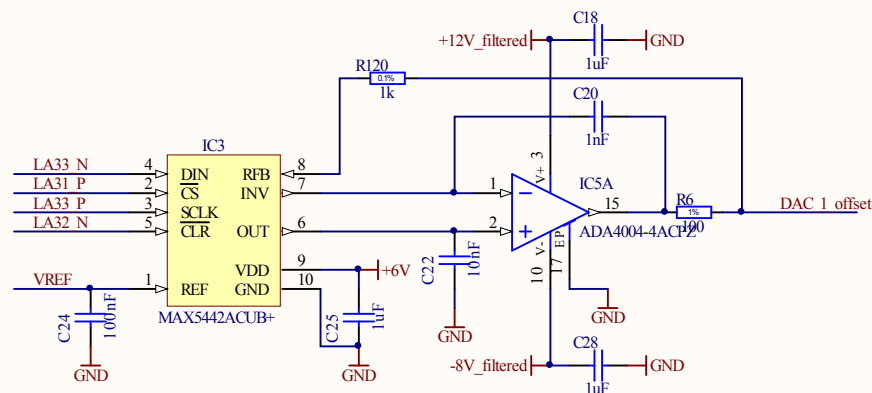
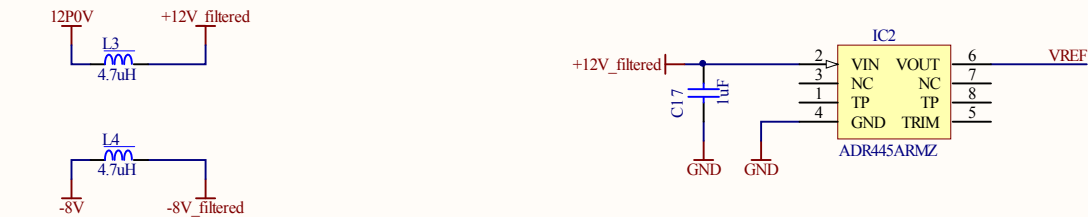
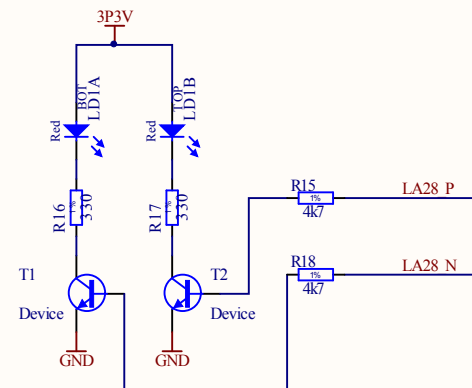
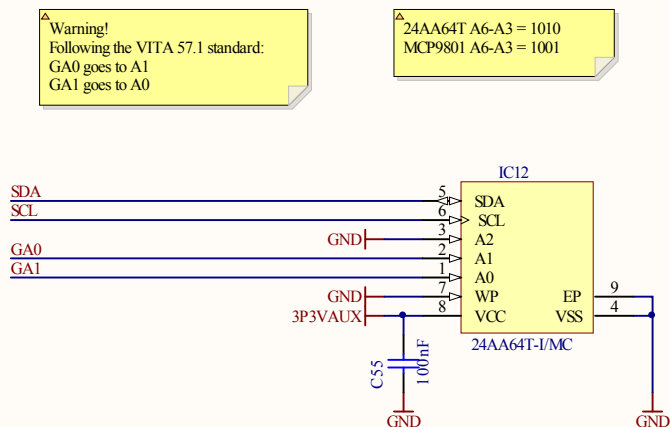


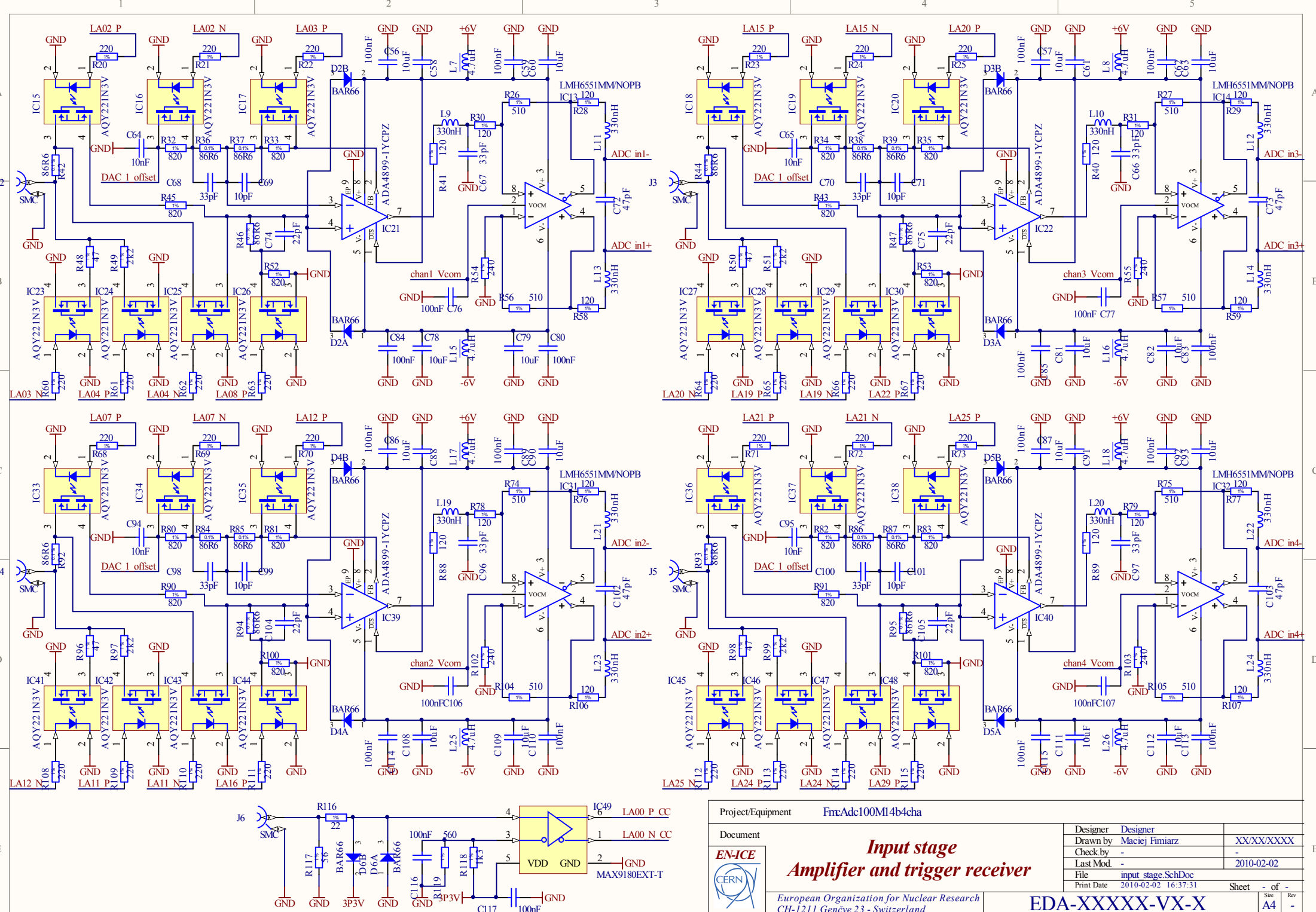
Project/Equipment		FmcAde100M14b4cha		Designer		Designer			
Document		 <b>Linear Technologies' ADC</b> <b>105MSPS 14b</b>		Drawn by		Maciej Fmierz		XX/XX/XXXX	
Check by				-		-			
Last Mod.				-		2010-01-27			
File				ADC.SchDoc					
Print Date				2010-02-02 16:37:31					
 European Organization for Nuclear Research CH-1211 Genève 23 - Switzerland		EDA-XXXXXX-VX-X		Sheet		- of -		A4 Size Rev	



Project/Equipment		FnxAdc100M14b4cha	
Document		<div> <div> </div> <div> <b>DACs and Vref source for offset correction</b> </div> </div>	
Designer		Designer	
Drawn by		Maciej Fimiars	XX/XX/XXXX
Check by		-	-
Last Mod.		-	2010-02-02
File		DACSchDoc	
Print Date		2010-02-02 16:37:31	
Sheet		- of -	
Size		A4	
Rev		-	



Project/Equipment		FnxAdc100M14b4cha	
Document		<b><i>I2C memory and LED indicator</i></b>	
	Designer	Designer	
	Drawn by	Maciej Fimiarsz	XX/XX/XXXX
	Check by	-	-
	Last Mod.	-	2010-01-25
	File	I2C mem LED.SchDoc	
Print Date		2010-02-02 16:37:31	
		Sheet	- of -
		Size	A4
		Rev	-



Switches configuration:							
	channel 1	channel 2	channel 3	channel 4			
sw1	LA02_P	LA07_P	LA15_P	LA21_P			
sw2	LA02_N	LA07_N	LA15_N	LA21_N			
sw3	LA03_P	LA12_P	LA20_P	LA25_P			
sw4	LA03_N	LA12_N	LA20_N	LA25_N			
sw5	LA04_P	LA11_P	LA19_P	LA24_P			
sw6	LA04_N	LA11_N	LA19_N	LA24_N			
sw7	LA08_P	LA16_P	LA22_P	LA29_P			
	sw1	sw2	sw3	sw4	sw5	sw6	sw7
100mV range:	on	on	off	-	off	on	off
1V range:	on	off	off	-	on	off	off
10V range:	on	off	on	-	off	off	on
DC offset error calibration:	off	off	off	off	off	off	on
500hm termination:	-	-	-	on	-	-	-

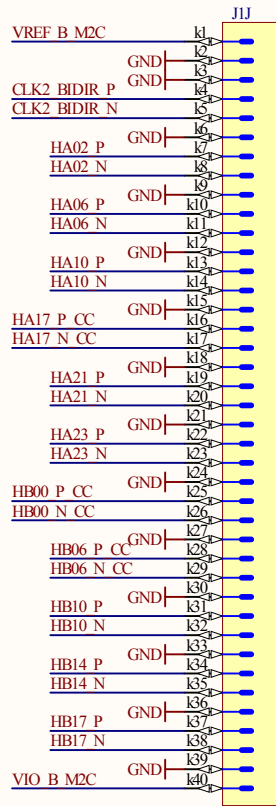
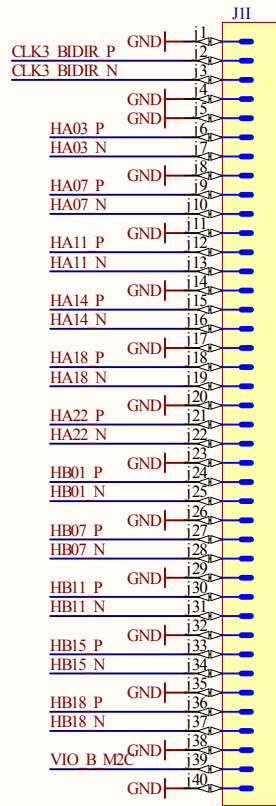
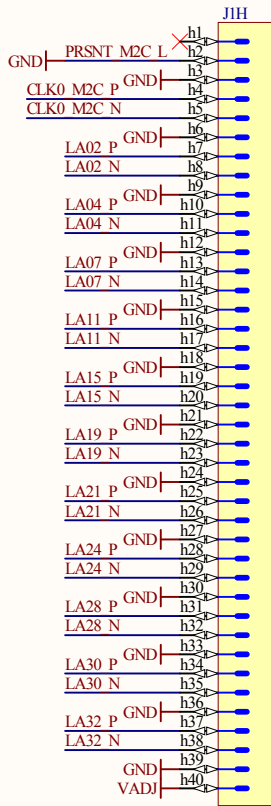
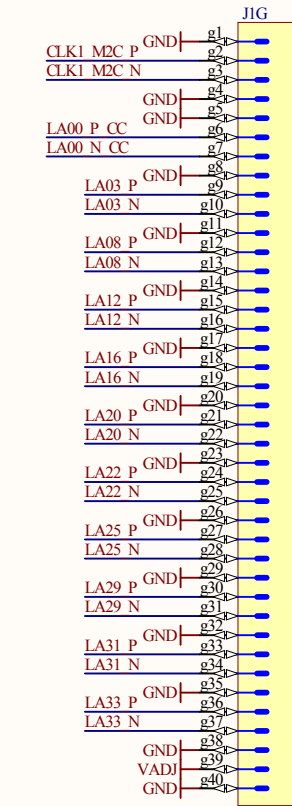
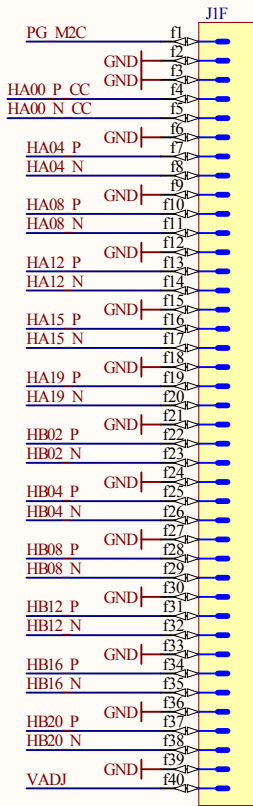
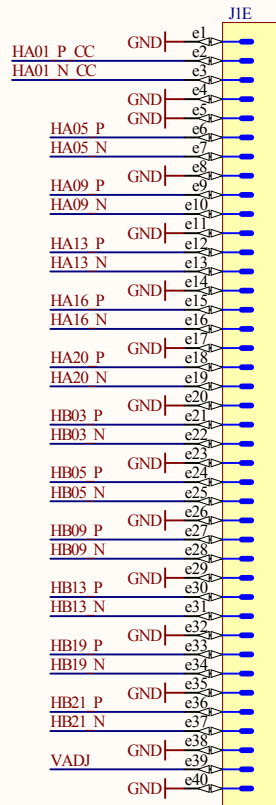
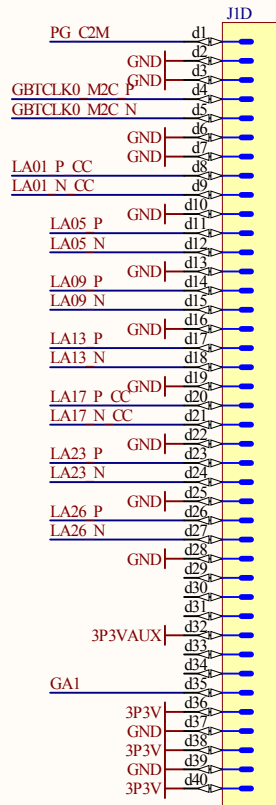
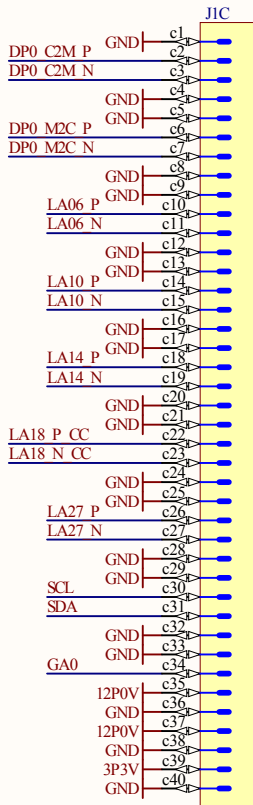
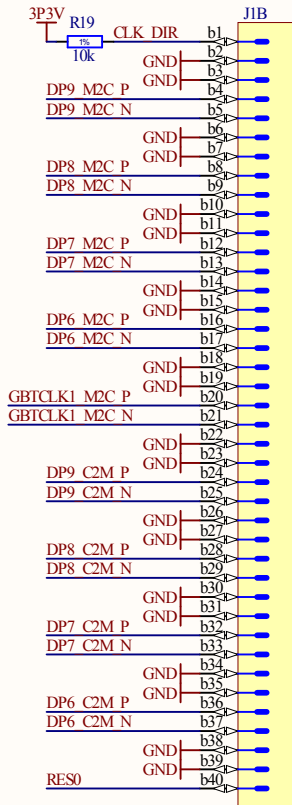
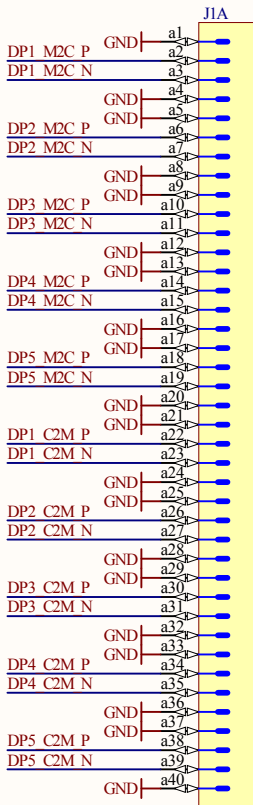
SPI - SCK	LA33_P
SPI - DIN	LA33_N
SPI - DAC_RST	LA32_N
SPI - CS_ADC	LA32_P
SPI - CS_DAC1	LA31_P
SPI - CS_DAC2	LA31_N
SPI - CS_DAC3	LA30_P
SPI - CS_DAC4	LA30_N
LED1	LA28_P
LED2	LA28_N

Trigger:	LA00_P_CC	LA00_N_CC	these lines can be swapped
DCO - output clock	LA18_P_CC	LA18_N_CC	
FR - frame sync	LA17_P_CC	LA17_N_CC	
optional ADC clock	LA01_P_CC	LA01_N_CC	
ADC clock	CLK2_BIDIR_P	CLK2_BIDIR_N	
ADC output 1 A	LA06_P	LA06_N	
ADC output 1 B	LA05_P	LA05_N	
ADC output 2 A	LA10_P	LA10_N	
ADC output 2 B	LA09_P	LA09_N	
ADC output 3 A	LA13_P	LA13_N	
ADC output 3 B	LA14_P	LA14_N	
ADC output 4 A	LA26_P	LA26_N	
ADC output 4 B	LA27_P	LA27_N	

Every single pair can be swapped with another to make routing simpler.

Every single line can be swapped with another without any restriction.





Project/Equipment FmrAdc100M14b4cha

Document

EN-ICE



**SAMTEC VITA 57**  
**High Pin Count Connector**

European Organization for Nuclear Research  
CH-1211 Genève 23 - Switzerland

Designer Designer

Drawn by Maciej Fimiarz

Check by -

Last Mod. -

File SAMTEC connector.SchDoc

Print Date 2010-02-02 16:37:32

Sheet - of -

Rev A4 -

EDA-XXXXX-VX-X