

A

A

B

B

C

C

D

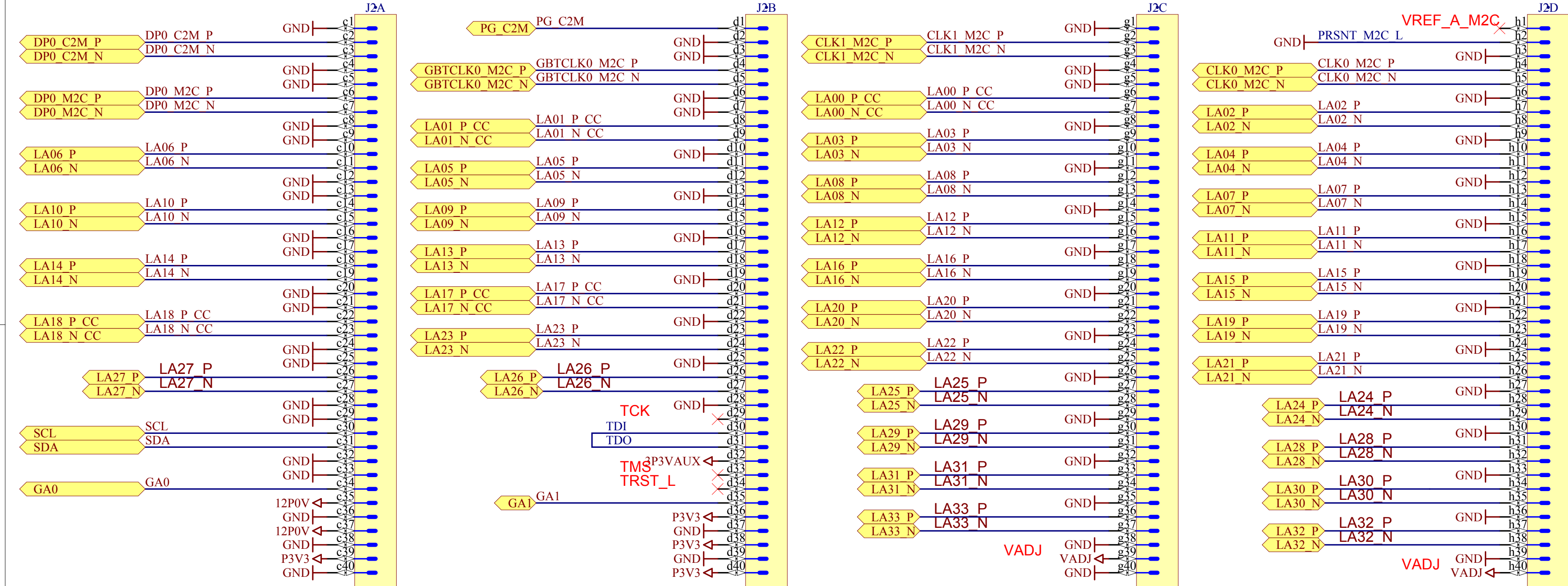
D

E

E

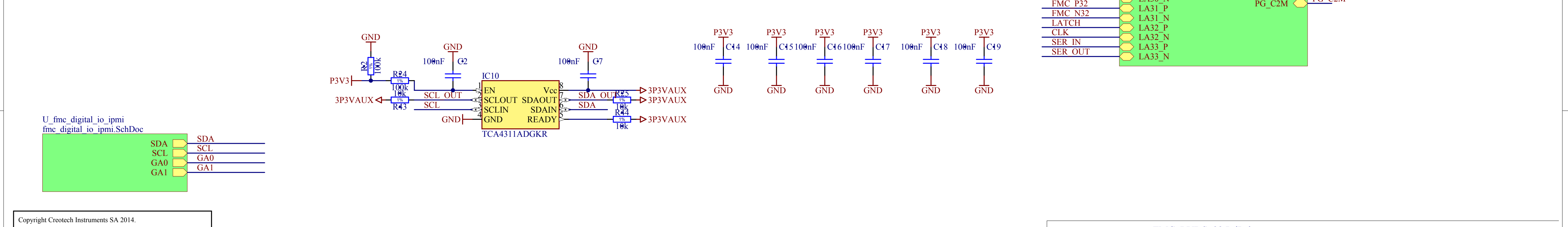
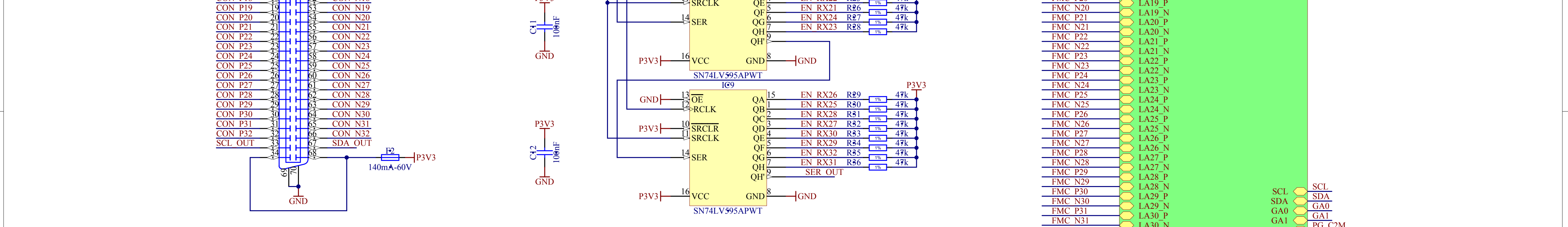
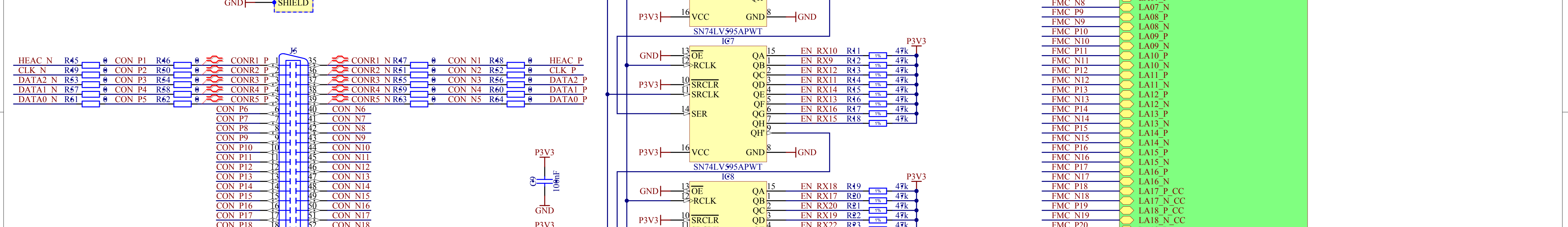
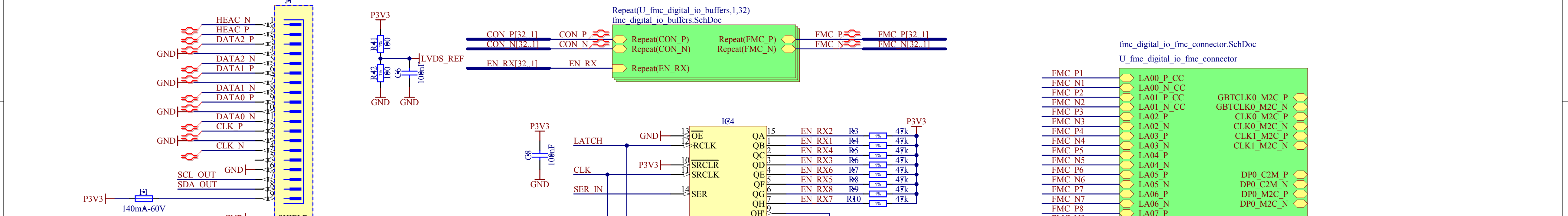
▲ Blue comment area = directives for layout

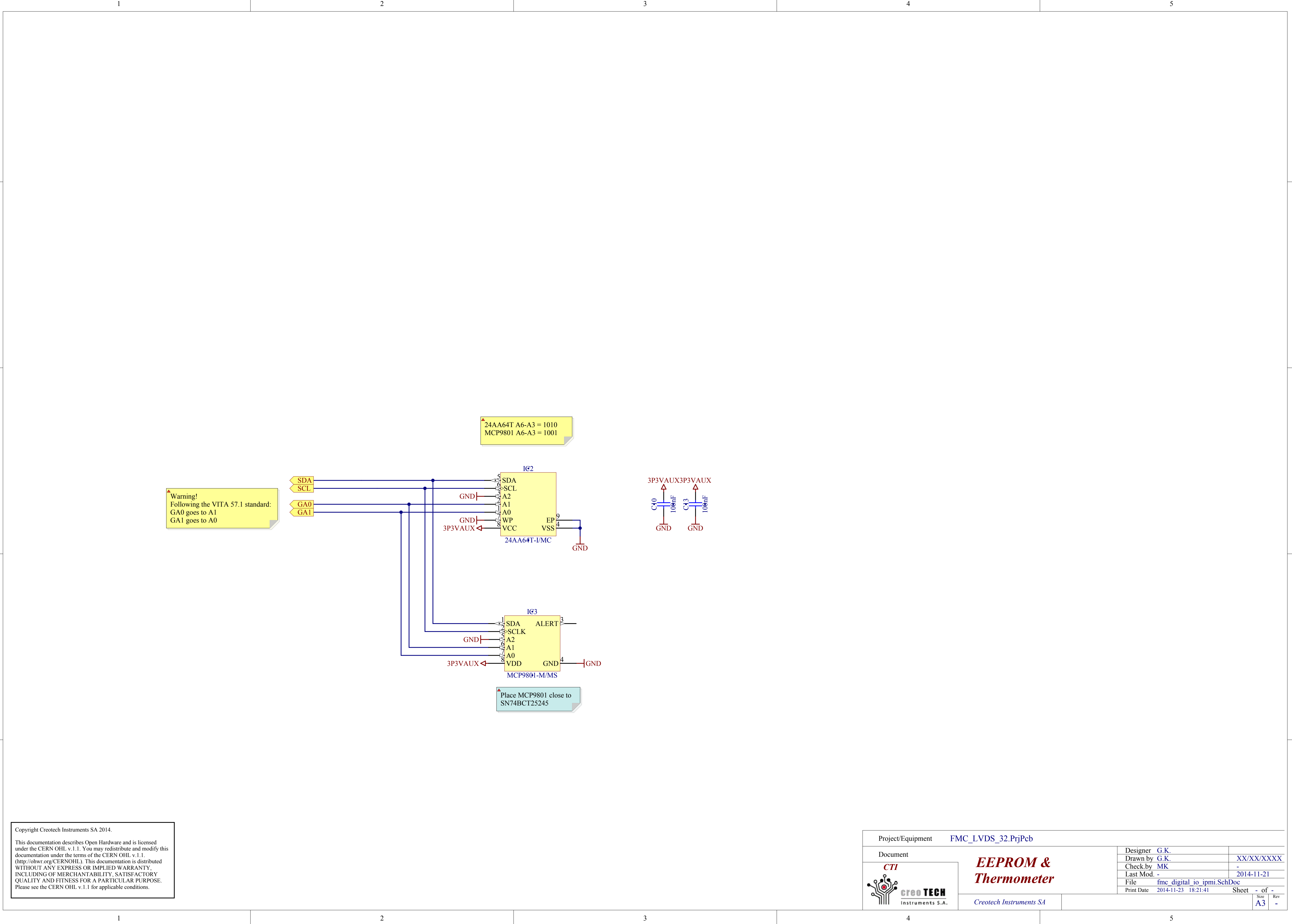
▲ Yellow comment area = general comment on design



A

A





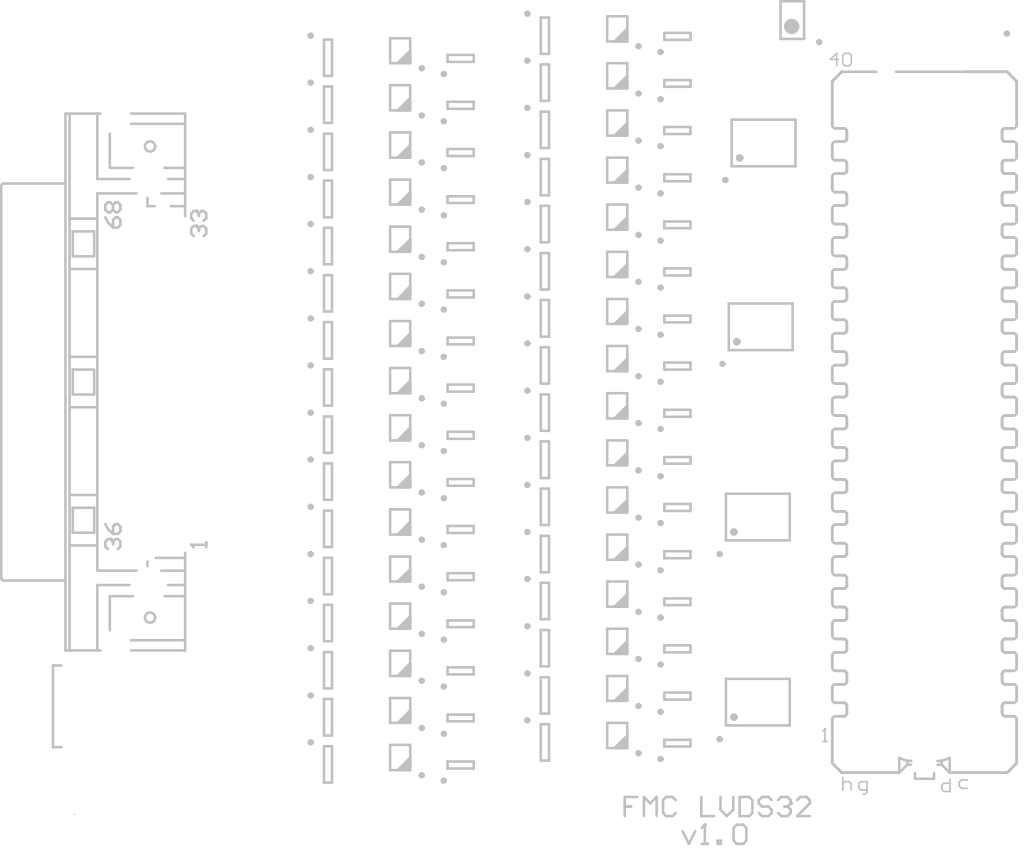
Copyright Creotech Instruments SA 2014.

This documentation describes Open Hardware and is licensed under the CERN OHL v.1.1. You may redistribute and modify this documentation under the terms of the CERN OHL v.1.1. (<http://ohwr.org/CERNOHL>). This documentation is distributed WITHOUT ANY EXPRESS OR IMPLIED WARRANTY, INCLUDING OF MERCHANTABILITY, SATISFACTORY QUALITY AND FITNESS FOR A PARTICULAR PURPOSE. Please see the CERN OHL v.1.1 for applicable conditions.

Project/Equipment		FMC_LVDS_32.PrjPcb	
Document		Designer	G.K.
 <div>CTI CREO TECH Instruments S.A.</div>		Drawn by	G.K.
		Check by	MK
		Last Mod.	-
		File	fmc_digital_io_ipmi.SchDoc
Print Date		2014-11-23 18:21:41	Sheet
			- of -
			Size
			A3
			Rev
			-

**EEPROM &
Thermometer**

Creotech Instruments SA





<http://www.ohwr.org/projects/fmc-1vds-32ch>

Licensed under CERN OHL

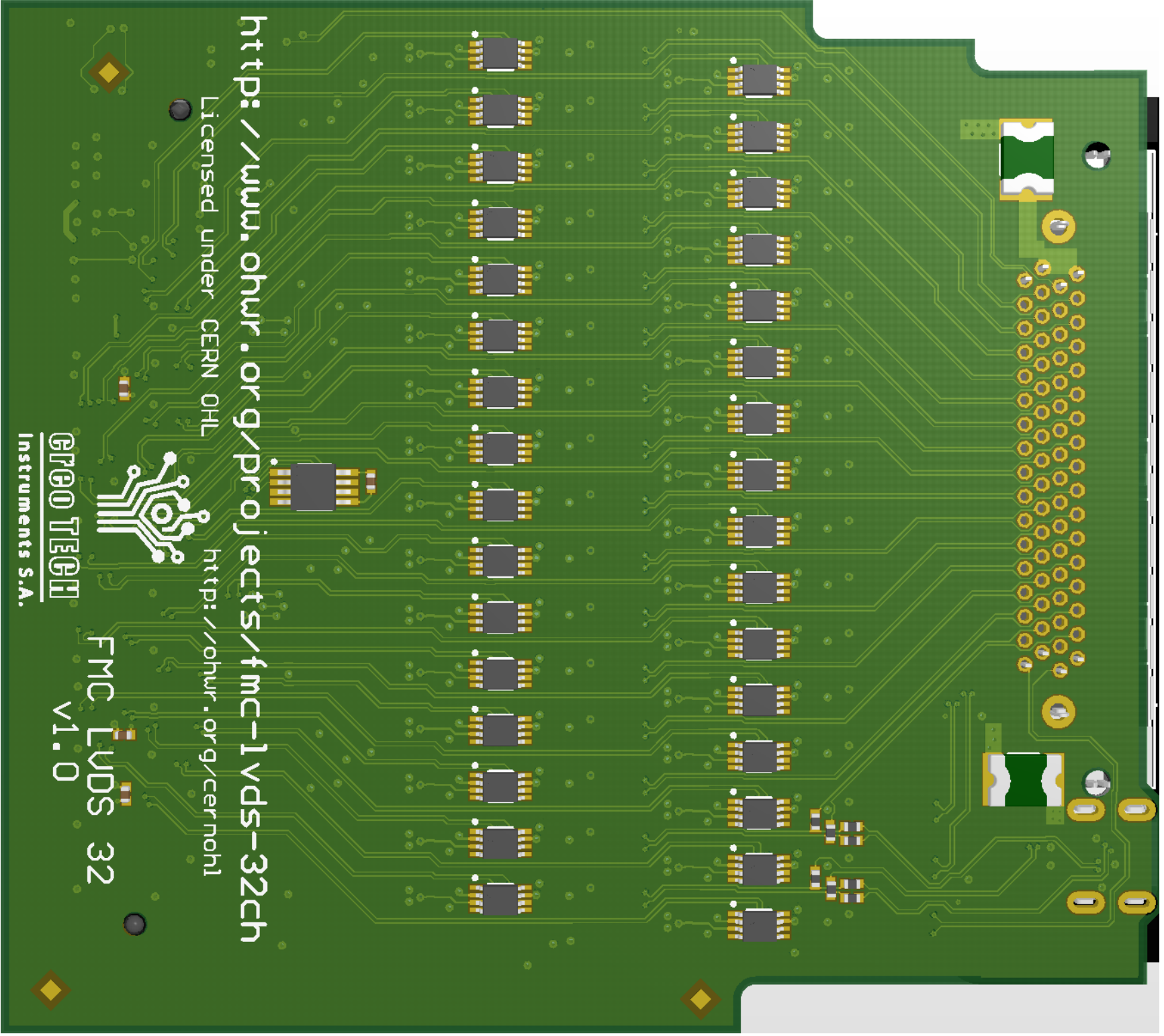
<http://ohwr.org/cernohl>



GIGA TECHNOLOGY

Instruments S.A.

FMC LUDS 32
v1.0



<http://www.ohwr.org/projects/fmc-1vds-32ch>

Licensed under CERN OHL

<http://ohwr.org/cernohl>

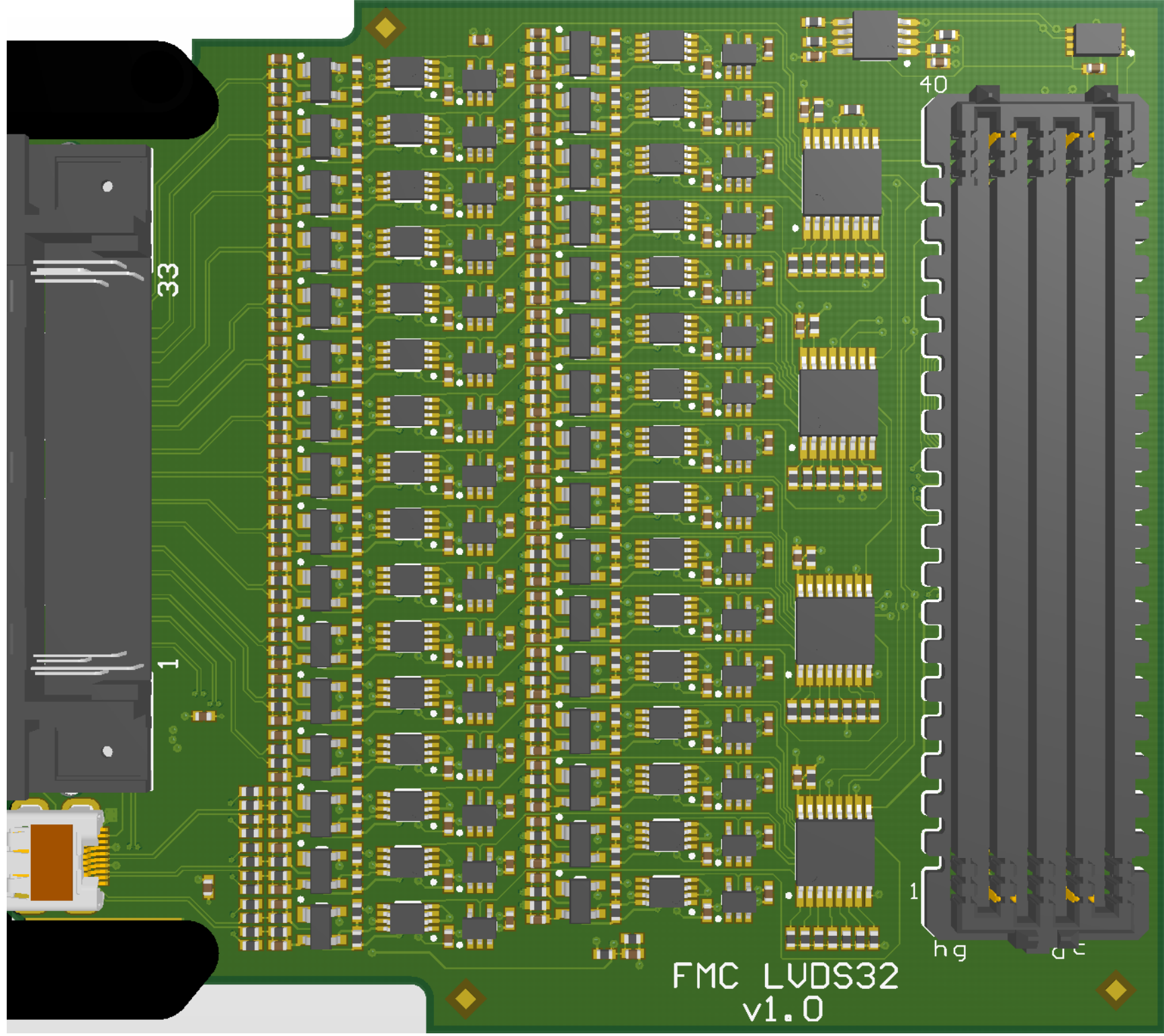


GTEO TECH

Instruments S.A.

FMC LVDS 32

v1.0



FMC LVDS32
v1.0

40

33

1

1

hg

dc