

Notes on enclosure for pulse/frequency distribution amplifier

<https://www.ohwr.org/projects/pda-8ch-fda-8ch>

AW2018-01-03



PCBs are 170mm wide, 70mm deep

Connectors:

SMA, through-hole right-angle jack , 50 ohm, e.g. Farnell 2293854

BNC, through-hole right-angle jack, 50 ohm, e.g. Farnell 1076295

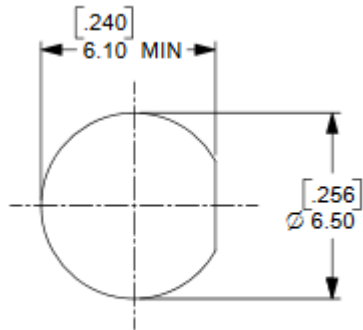
PSU, e.g. Digikey 1470-2615-ND

Power entry connector, e.g. Farnell 1430802

Notes on enclosure for pulse/frequency distribution amplifier

<https://www.ohwr.org/projects/pda-8ch-fda-8ch>

AW2018-01-03

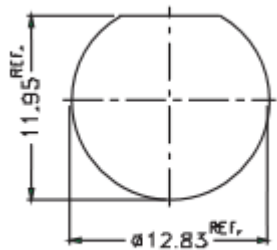


SMA.

Center-pin is 6.35 mm up from PCB topsurface

[http://www.molex.com/pdm\\_docs/sd/732512200\\_sd.pdf](http://www.molex.com/pdm_docs/sd/732512200_sd.pdf)

RECOMMENDED PANEL CUTOUIT

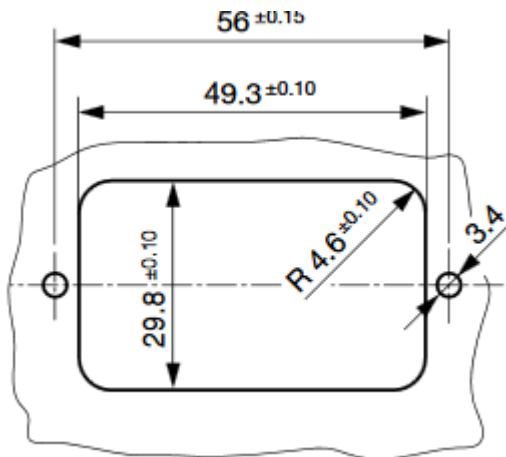


RECOMMENDED  
MOUNTING HOLE

BNC

Center-pin is 8.56 mm up from PCB topsurface

<http://www.farnell.com/datasheets/612848.pdf>

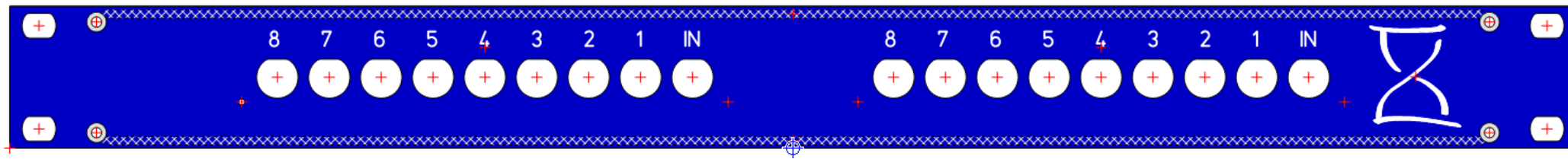


Power entry connector

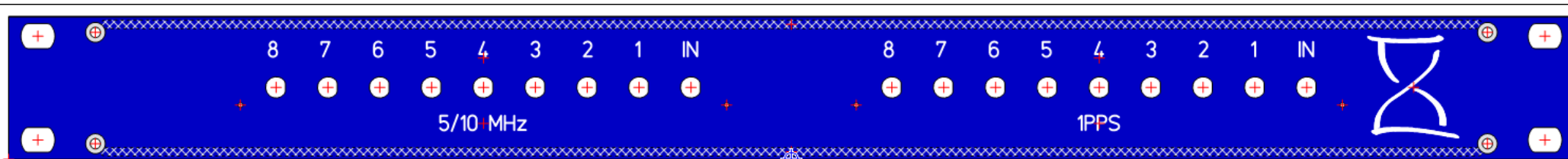
<http://www.farnell.com/datasheets/2097172.pdf>

### Example front-panel for BNC connectors

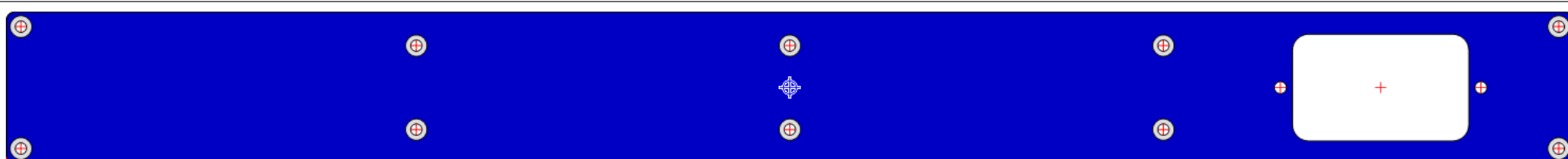
Note 1 mm holes for LEDs positioned 10mm in from PCB edges



### Example front-panel for SMA connectors



### Example back-panel with Power Entry


















Notes on enclosure for pulse/frequency distribution amplifier

<https://www.ohwr.org/projects/pda-8ch-fda-8ch>

AW2018-01-03

Typical Schaeffer order (for 2 enclosures)

Pos.	Quantity	Description	Unit price	Discount	Expedite fee	Total
10	2 <input type="text" value="2"/>  	<b>Housing bracket 8 x per unit company standard, natural anodized</b> consists of 8x housing brackets Item No.: GGWS0112	10.87 €	0%	0%	21.74 €
20	4 <input type="text" value="4"/>  	<b>Assembly kit ISP/B3.0-ZI DIN 7982, white galvanized</b> consists of 8x countersunk head screws ø2.9 x 9.5 mm and 4 self-adhesive rubber feet ø8 mm, height 2.5 mm Item No.: GGMS1102	2.17 €	0%	0%	8.68 €
30	1 <input type="text" value="1"/>  	<b>Screw packet M3x6-965-ZI DIN 965, white galvanized</b> consists of 50x countersunk head screws M3 x 6 mm Item No.: GGRB1306	1.74 €	0%	0%	1.74 €
40	4 <input type="text" value="4"/>  	<b>Side profile 1, anodized</b> Item No.: GLGP1011 Length: <input type="text" value="150.0"/>  mm	4.81 €	0%	0%	19.24 €
50	2 <input type="text" value="2"/>  	<b>Front panel <a href="#">back.fpd</a></b> Width: 437.50mm, Height: 42.00mm, Thickness: 2.50mm, Material: Aluminum anodized, Color: Blue	34.97 €	0%	0%	69.94 €
60	2 <input type="text" value="2"/>  	<b>Front panel <a href="#">front.fpd</a></b> Width: 483.00mm, Height: 43.60mm, Thickness: 3.00mm, Material: Aluminum anodized, Color: Blue	74.99 €	0%	0%	149.98 €
70	4 <input type="text" value="4"/>  	<b>Front panel <a href="#">top+bottom.fpd</a></b> Width: 423.30mm, Height: 151.50mm, Thickness: 2.50mm, Material: Aluminum anodized, Color: Natural	38.23 €	0%	0%	152.92 €