

SaFariPark/MultiSFP manual

Vincent van Beveren

May 23, 2017

1 Introduction

The manual is very much a work in progress. So far there is not a lot in here.

2 MultiSFP

3 SaFariPark

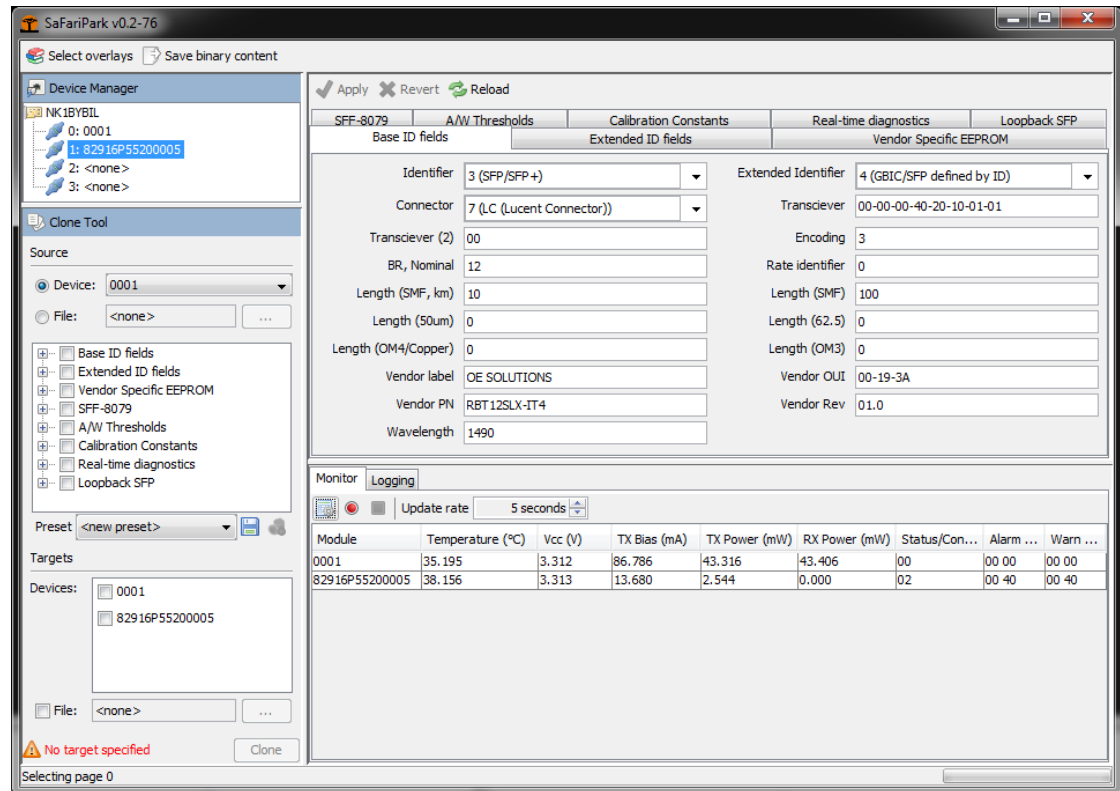


Figure 3.1: Start up screen of SaFariPark

SaFariPark is the main GUI application for reading, calibrating and configuring SFP modules. When loaded a window should appear as presented in Figure 3.1. All connected MultiSFP devices are listed in the device manager top right. Each bay shows the connection state and if a module is placed, the part identifier and serial number.

3.1 Viewing and editing the SFP module contents

SaFariPark shows, in the edit pane, a higher overview of the content loaded inside the SFP module.

✓ Apply
✗ Revert
↻ Reload

A/W Thresholds	Calibration Constants	Real-time diagnostics	Maxim DS1856M	Loopback SFP
Base ID fields	Extended ID fields	Vendor Specific EEPROM	SFF-8079	

Options

10-7A

☐ Linear Receiver Output Implemented
 ☐ Power Level Declaration
 ☐ Cooled Transceiver declaration
 ☐ Retimer or CDR
 ☒ Paging implemented
 ☐ High Power Level Declaration
 ☒ Loss of Signal implemented
 ☐ Signal Detect Implemented
 ☒ TX_FAULT signal implemented.
 ☒ TX_DISABLE is implemented
 ☒ RATE_SELECT functionality is implemented
 ☒ Tunable transmitter technology
 ☐ Receiver decision threshold implemented

BR Max

0

 Vendor SN

Virtual_1

Mon Type

60

☐ Address change required
 ☐ Received power is average
 ☐ Externally Calibrated
 ☒ Internally Calibrated
 ☒ Digital Diag Implemented

BR Min

0

 Date Code

16011400

Figure 3.2: The editor

3.2 Ubuntu configuration

To run SaFariPark on Ubuntu two things need to happen:

- The rights of the FTDI device must be relaxed such that any use has read and write permissions
- The `ftdi_sio` driver must be prevented from loading, as it will interfere with opening the device

Relaxing driver rights

Create a file named `90-ftdi` in `/etc/udev/rules.d/` and put in the following statement:

```
SUBSYSTEM=="usb", ATTRS{idVendor}=="0403", MODE="0666"
```

Prevent loading of the `ftdi_sio` driver

Edit the file `/etc/modprobe.d/blacklist.conf` and append the following line:

```
blacklist ftdi_sio
```

Note: This will prevent any FTDI based device from being loaded as a USB serial converted.

4 Appendices

4.1 Overlay XML description